

# Somebody to love

ALT

QUEEN - FREDDIE MERCURY

NON TROPPO FEBRUARI 2020

5 **A** 3

12 **B** Take a look at your-self in the mi-ir-ror and

18 cry ye e-yeah Ooh ooh be - lie-ving you I just can't get no re - lief Lord

28 **C** Some-bo-dy Some-bo-dy **D** A - ny-bo-dy find me

35 He works hard **E** At the end of the day my hard pay

40 **F** I just keep wor-king down knees Praise the Lord Oooh oooh ooh Lord!

47 Some-bo-dy **G** Some-bo-dy A - ny-bo-dy find me Lo - o -

53 **H** p - o - o - ove He works hard e - v'ry day try and I try and I try

60 Oooh Oooh Aaah Aaah he's got

65 **I** no - bo-dy left to **J** be - lieve Ye - e Ye - e Ye - e Ye - e Ye

79 Oooh oooh **K** Oooh Lord! Some-bo-dy Some-bo-dy A - ny-bo-dy

84 find me Can't a - ny - bo - dy - y - y

find me - e some - one to love

2

89



94 **L** You just keep loo-sing and loo-sing He's all-right he's all-right Ye e - yea



100 **M** ooh this pri-son cell Some day I'm gon-na be free Lord\_\_



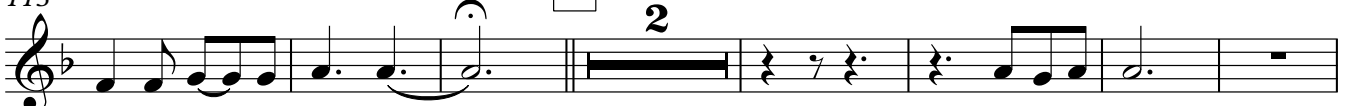
104 Find me some-bo-dy to lo - ove Find me some-bo-dy to lo - ove



108 **N** find me some-bo-dy to lo - ove Find me some-bo-dy to lo - ove



113 Some-bo-dy Some-bo-dy **O** find me Some-bo-dy find me some - bo-dy to love can



122 **P** a - ny bo - dy find me Lo o - o - ove  
7 KEER, VERTRAGEN BIJ 7e KEER



(love) Find me some - bo - dy to - o - o - o love!